

S
D | Skyline Design



Afterglow™
Glassboards
by Suzanne Tick





Afterglow Glassboards by Suzanne Tick feature a bold accent stripe on a smooth, writable, glass surface.

Inspired by the natural phenomenon of atmospheric inversion and quiet dappled light shadows seen through panes of glass and contemporary glassware.

Suzanne Tick developed 6 distinct color stripes that speak to such transitions of light, atmosphere, and visual effects, particularly for branding in corporate and education environments.

Blueshift / **1** **4** / Infrared
Solar / **2** **5** / Helios
Moonstone / **3** **6** / Aurora



Made in Chicago with all materials sourced in USA



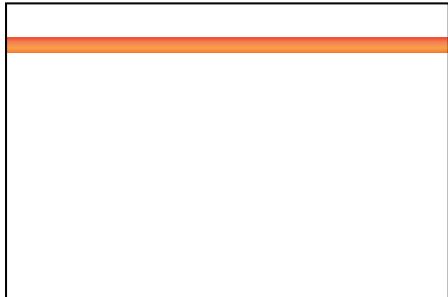
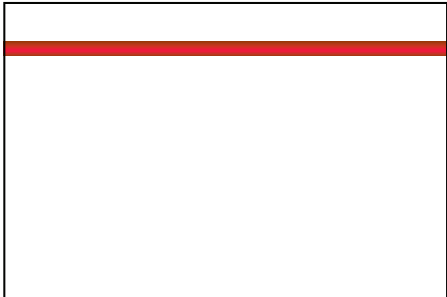
Strong magnetic backer available

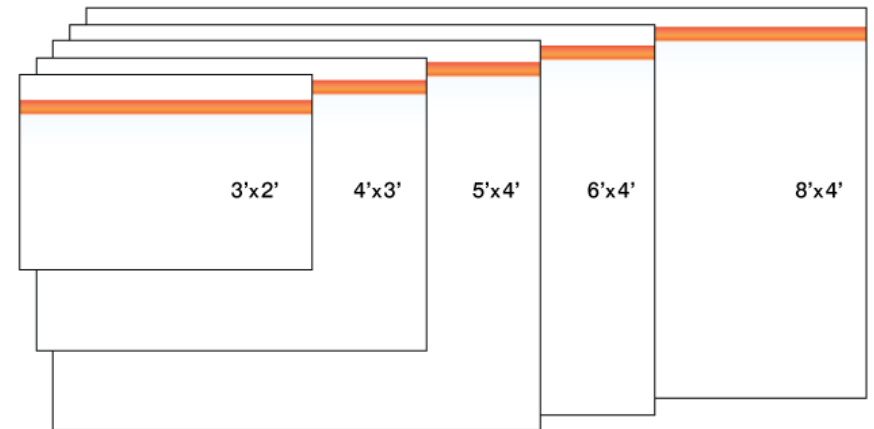


Guaranteed to last the life of the wall



Easy to install with z-clip





Glass: 1/4" Low-iron Starphire Tempered Safety Glass

Writable Surface: Compatible with any marker

Sizes: 3'x2', 4'x3', 5'x4', 6'x4', 8'x4'

Mounting: Z-clip hanger or Edge-grip standoffs

Magnetic: Magnetic or non-magnetic

Custom: Any size up to 12' x 8', Custom colors available

Flammability: ASTM E 84 Class A

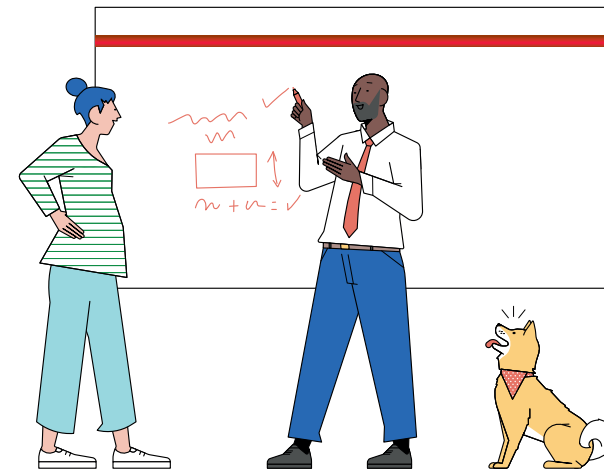




Suzanne Tick

Suzanne Tick is the founder of Suzanne Tick Inc., specializing in materials brand strategy, product design, development, and direction for commercial interiors. She has maintained a distinguished career as a textile designer and studio Principal in New York City.

She is currently a Design Consultant for Tarkett; serves as Creative Director at Luum; and is a Design Partner with Skyline Design. Suzanne has been a design partner with Skyline Design since 2008 and is responsible for some of the company's best-selling collections.





S | Skyline Design

skydesign.com